

MI Inoculant

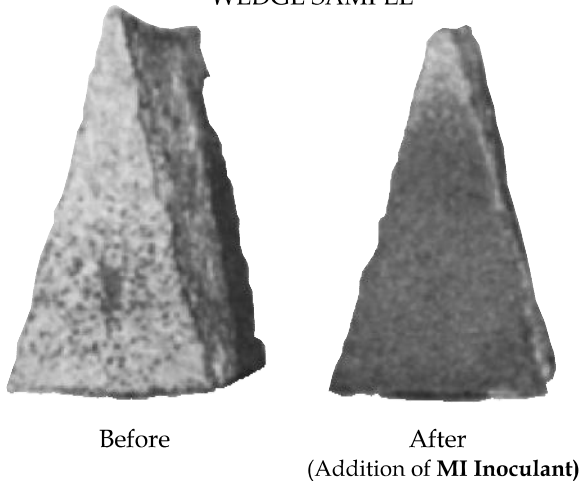
A process additive, developed by our In-House R&D to achieve the desired level of graphite distribution, machinability properties and micro structures in the manufacture of Grey & SG Iron castings. It is an eco-friendly product manufactured in combination with silicon carbide and other rare earth materials.

Advantages :

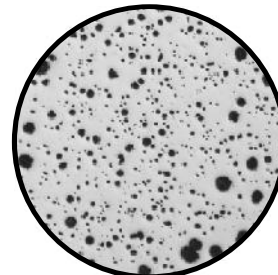
- ✓ Promotes Pearlitic Matrix
- ✓ Develops greater than 95% of type 'A' graphite flake distribution
- ✓ Reduces chilling effect
- ✓ Improves Machinability and Mechanical properties in castings
- ✓ Increases Nodule Count & Nodularity in case of SG Iron
- ✓ Increases fading time
- ✓ Reduces section sensitivity of castings (maintains uniform hardness)

GRADE	% Si	% C	% RE (max)	Size (mm)
MI INOCULANT- 90	50 - 55	45 - 50	0.4 (min)	0.5 - 1.7
MI INOCULANT- DI (Treatment Ladle)	65 - 68	20 - 25	Traces	0.5 - 2.8
MI INOCULANT- Ca (Calcium Base)	55 - 60	20 - 25	Ca 10% Max.	0.5 - 1.7
MI INOCULANT- Ba (Barium base)	50 - 55	45 - 50	Ba 2 - 3%	0.5 - 1.7

WEDGE SAMPLE



Effect of MI Inoculant
In Gray Iron X 100



Effect of MI Inoculant
In SG Iron X 100

Method of Use :

1. Upto IS 25 grade: 0.15 - 0.25% by weight
2. Above IS 25 Grade: 0.25 - 0.35% by weight
3. For spheroidal graphitic iron 0.7 - 0.8% by weight

We don't sell products, but, Innovations

